

SPECIFICATIONS

Model		MU4501
Engine	Type	Kubota V2403-M-DI-E3, Inline FIP, 4 Cylinder, Liquid Cooled
	Displacement	2434 cc
	Air Filter	Dry Type, Dual Element
	Clutch	Double Clutch
Transmission	Gear Box	8 Forward + 4 Reverse Main Transmission Synchronesh
	Speeds	Forward Min 3.0 - Max 30.8 kmph Reverse Min 3.9 - Max 13.8 kmph
Brakes	Type	Oil Immersed Disc Brakes
Front Axle	Type	Fix
Hydraulics	Lifting Capacity	1640 kgf (at lift point)
Steering	Type	Hydraulic Double acting power steering
Power Take Off	Type	Independent, Dual PTO
PTO RPM		STD : 540 @2484 ERPM ECO : 750 @2481 ERPM
Wheels & Tyres	Front	8x18 /8.3x20 [Low lug & High lug]
	Rear	13.6x28 /14.9x28 [Low lug & High lug]
Electrical System	Battery	12 Volt
	Alternator	40 Amp
	Starter Motor	12 Volt, 2.2 kW
Dimensions & Weight	Total Weight	1970 Kg
	Wheel Base	1990 mm
	Overall Length (without 3P)	3110
	Overall Width	1870
	Ground Clearance	365
Front Axle Drive	Turning Radius with Brakes	2.90
	Front wheel Drive	4 x 4
Others	Deck Design	Full flat
	Fuel Tank Capacity	60 Liters

Calculated according to our criteria. The actual capacity you achieve may be different.
The specifications, information, and appearance of the machines herein are subject to change without notice.

Quality you can trust on

Kubota received the Deming Prize which is the highest proof of recognition of major advances in quality improvement. Kubota has also received the ISO9001 Certification which is the international standard of quality management systems, the ISO14001 Certification which is the international standards related to environment management, and the OSHAS 18001 Certification which is the international assessment series of occupational health and safety systems.



The Deming Prize



OSHAS 18001 Certification



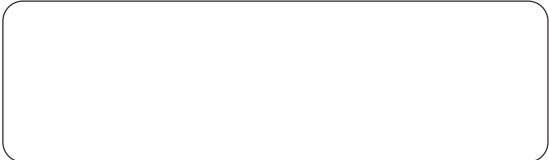
ISO9001 Certification



ISO14001 Certification

KUBOTA/ FEBRUARY 2023/ ENGLISH

Kubota Agricultural Machinery India Pvt Ltd.
No.94, TVH BELICIAA, TOWER- 1,
8th floor, MRC Nagar, Chennai - 600 028
Tel : +91 - 44 - 6104 1500 Fax : 044 6104 1600
Web : www.kubota.co.in, Follow Us :



Toll Free : 1800 309 1694



JAPAN'S NO.1* TRACTOR COMPANY

MU

MU4501 (45HP Category)

Comfort • Performance • Durability



Kubota Quad-4
Piston



Synchronesh
Transmission



Dual Acting
Power Steering



Shuttle
Shift

*terms & conditions apply

*Disclaimer: A per Japan's Journal GYOKAI, Kubota ranks No.1 (Agri Machinery) for the year 2021 in turnover

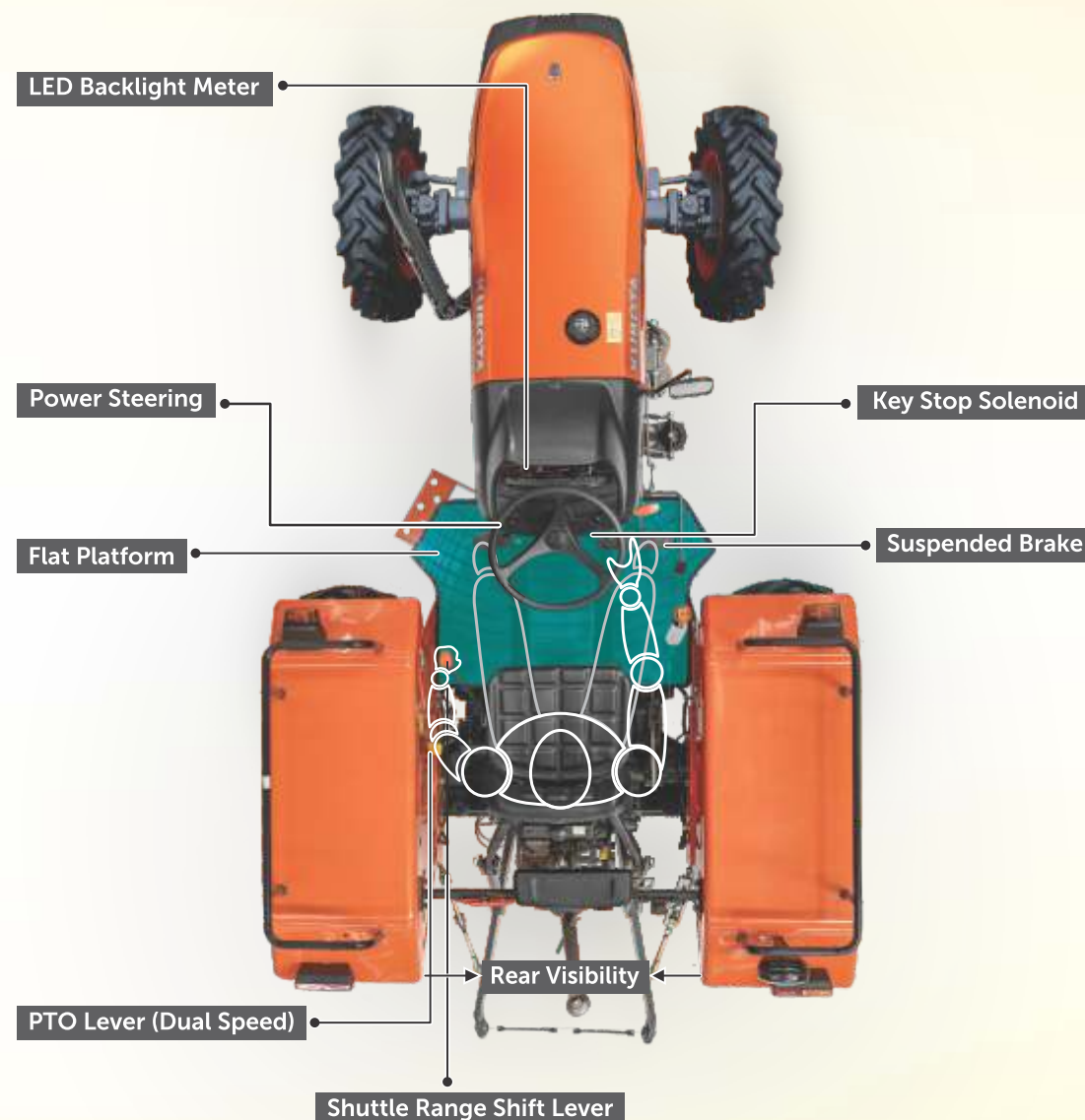
Operator-friendly Driving System

Operation devices are located for more efficient and comfortable work

MU4501

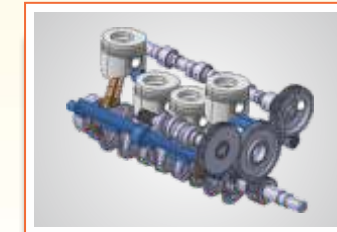
Equipped with Operator Friendliness & Comfort for agriculture operations

THE POWER OF COMFORT



ENGINE

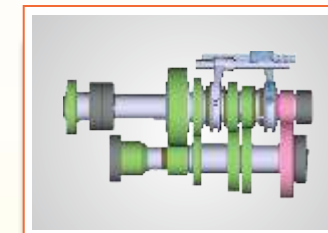
Kubota Quad-4 Piston
Quad Piston ring which reduces friction and ultimately improves fuel efficiency



Balancer Shaft
Less Vibration & Low Noise

SMOOTH TRANSMISSION

Synchromesh Transmission
Smooth engaging of the gears when shifting



Shuttle Shift
Changing of forward & backward direction is made easy

COMFORT

Flat Platform
Easy get in & get down without any interference



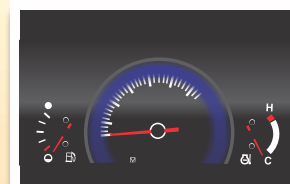
Suspended Brakes
Improves Operator Comfort



Dual Acting Power Steering
Excellent turning performance



Key Stop Solenoid
Operator can stop the engine only by turning key



LED Display
Indicators can be easily recognised by Operators during night



Single Piece Bonnet
Easy to Open & use better accessibility to engine compartment



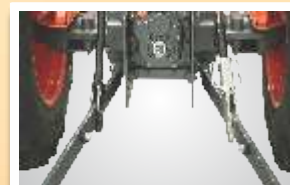
Independent Dual PTO
A lever allows the operator to simply change PTO speed (standard 540 and economy 750)



Widest Fender
Design for easy & stable baggage loading



Bevel Gear
Less Maintenance, improve life & Hassle free driving in turns



High Hydraulic Lift Capacity
High lift capacity enough for the implements used on these tractor



4 Fin Clutch
33% better Durability Compare to regular Clutch



World's Top Class High Quality Oil Seals
The oil seals are made by reliable Japanese seal manufacturing company